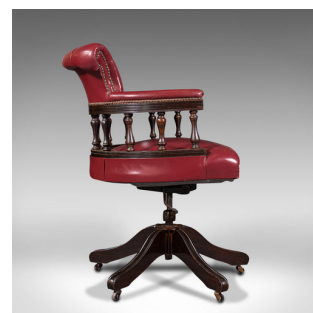
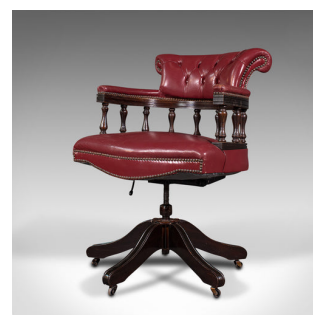
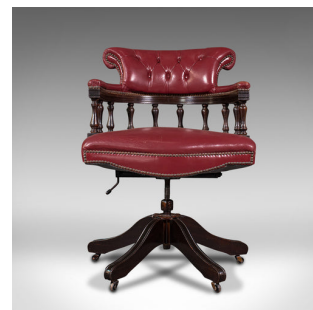


Vintage Captain's Chair, English, Leather, Desk, Victorian Revival, Circa 1960



DESCRIPTION

Our Stock # 18.7650

This is a vintage captain's chair. An English, leather desk swivel chair in Victorian revival taste, dating to the mid 20th century, circa 1960.

- Appealing colour and turned craftsmanship
- Displays a desirable aged patina throughout
- Rich, deep red leather with eye-catching press stud trim
- Deeply buttoned back rest with striking scrolled form
- Elbows raised upon a demi-lune gallery of turned balusters
- Some signs of gentle use present to elbows commensurate with age
- Traditionally padded seat cushion at a comfortable height of 46.5cm to 55cm (18.25" to 21.75")
- Unusual, shaped front valance with press stud border
- Central riser adjusts by way of a twist nut through 9cm (3.5")
- Lever to right locks and unlocks the tilt mechanism
- Standing upon five squat legs with smooth riding castors to each

Search [London Fine for #18.7650](#), or scan the QR code for more photos and details

DIMENSIONS

- Max Width: 62.5cm (24.5")
- Max Depth: 63.5cm (25")
- Lowered Height: 81cm (32")
- Raised Height: 89cm (35")
- Seat Width: 49cm (19.25")
- Seat Depth: 50.5cm (20")
- Seat Lower Height: 46.5cm (18.25")
- Seat Raised Height: 55cm (21.75")

