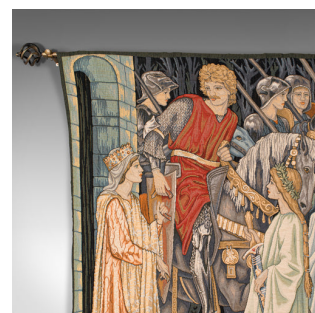


Large Vintage Tapestry, French, Jacquard, Decorative Wall Covering, Holy Grail



DESCRIPTION

Our Stock # 18.7674

This is a large vintage tapestry. A French, jacquard embroidered decorative wall covering showing the quest for the Holy Grail, dating to the late 20th century.

- Epic scene a recreation of La Quete Du Saint Graal, hanging in The Birmingham Museum
- Displays a desirable aged patina in very good order
- Heavy tapestry of fine quality presents incredible detail and colour
- Numerous figures stand above the meticulous forest ground with its foliate detail
- Maker's label to rear presents fascinating information about the original museum piece
- Brass hanging rail with attractive finials and flower head brackets aid ease of mounting

This is a striking vintage tapestry, with superb proportion and quality hand-finished detail. Set to grace a large wall, delivered ready to mount.

Search [London Fine for #18.7674](#) , or scan the QR code for more photos and details

DIMENSIONS

- Tapestry Width: 193cm (76")
- Tapestry Depth: 0.5cm (.25")
- Tapestry Height: 134cm (52.75")
- With Rail Width: 221cm (87")
- With Rail Depth: 7cm (2.75")

