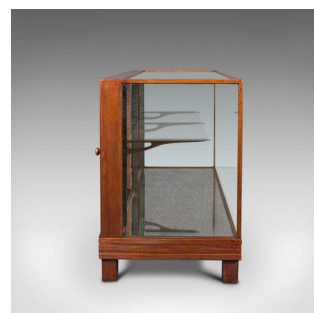


Antique Haberdasher's Display Cabinet, English, Mahogany, Showcase, Edwardian



DESCRIPTION

Our Stock # 18.7652

This is an antique haberdasher's display cabinet. An English, mahogany and glass showcase dating to the Edwardian period, circa 1910.

- Generously sized showcase ideal for the collector or shop environment
- Displays a desirable aged patina and in good order throughout
- Select mahogany shows fine grain interest and deep caramel hues
- Toughened glass in good order with light marks to top, commensurate with careful use

- Graced with slim pillars to maximise viewing within
- Wide mahogany doors to rear dressed with a pair of brass pulls
- Arranged as a pair of wide glass shelves upon shaped bracket arms
- Adjustable in height, with a range of 59cm (23.25")
- Mirrored back helps project light back onto the display area
- Display base similarly mirrored to enhance the showcase appeal
- Deep front apron with moulded edge, continuing to the sides

Search [London Fine for #18.7652](#), or scan the QR code for more photos and details

DIMENSIONS

Max Width: 167.5cm (66")

Max Depth: 62.5cm (24.5")

Max Height: 89.5cm (35.25")

Shelf Height Above: 25.5cm (10")

Shelf Height Below: 40cm (15.75")

