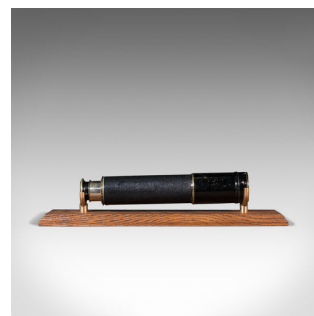
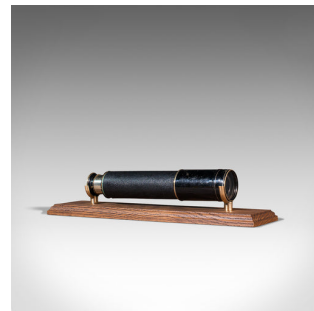


Antique Three Draw Telescope, English, Brass, Terrestrial, Ross, Edwardian, 1910



DESCRIPTION

Our Stock # 18.7660

This is an antique three draw telescope. An English, brass terrestrial refractor by Ross of London, dating to the Edwardian period, circa 1910.

Perfect for bird watching, landscape appreciation, wildlife, or maritime observation. Equally suitable for observing the night sky.

- Appealing antique telescope from a renowned maker
- Displaying a desirable aged patina throughout
- Silvered brass finish offering bright, reflective tones
- Clear, bright objective with 40mm diameter
- Front element protected by sliding sun shade in blackened finish
- Primary barrel dressed in a deep black leather covering
- Flared eye-cup with sliding dust cover and superb, concentric ring finish
- Of three draw form, the whole drawing smoothly - some resistance to sun shade
- The draw tube engraved with the Ross London mark and serial number 31389
- Tube also engraved with the monogram of HJP

Search [London Fine for #18.7660](#), or scan the QR code for more photos and details

DIMENSIONS

Closed Length: 25.5cm (10")

Fully Drawn Length: 82cm (32.25")

Objective Diameter: 4cm (1.5")

LIST PRICE

£945.00

