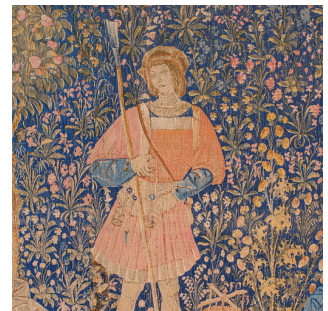


Large Antique Tapestry, French, Needlepoint, Decorative Wall Covering, C.1920



DESCRIPTION

Our Stock # 18.7676

This is a large antique tapestry. A French, needlepoint decorative wall covering depicting wool workers in the Loire valley, dating to the early 20th century, circa 1920.

Of superior proportion, this tapestry is a quality recreation of a 16th century renaissance tapestry known as Travail de la Laine (literal - Wool work). The original has been displayed in the famous Louvre gallery, Paris.

- Generously sized for decorative wall mounting at 6' 5" x 4' 7" (200cm x 144cm)
- Displaying a desirably aged patina with minimal signs of sun fading
- Quality needlepoint tapestry, issuing copious fascinations and in very good order
- Beautiful colour palette in a multitude of hues a treat for the senses
- Two female figures flank a standing male to the centre whilst trees, plants and animals enthusiastically decorate the scene
- Label to rear for the traditional French tapissiers Artis Flora
- Key details of the piece in hand-written French, including the age for the original museum piece
- Dressed to the rear with six hanging mounts for ease of wall display

DIMENSIONS

Max Width: 200cm (78.75")

Max Depth: 0.5cm (.25")

Max Height: 144cm (56.75")



This is a highly decorative large antique tapestry with beautiful renaissance tas

Search London Fine for #18.7676, or scan the QR code for more photos and details.
 +44 (0) 207 1855 511

London Fine Ltd
 The Antique Village
 The Old Whiteways Cider Factory
 Hele, Devon, EX5 4PW

sales@londonfine.co.uk
 E. & O. E.