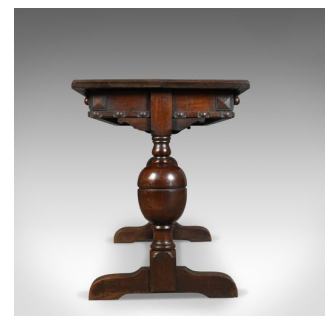




Extending Antique Dining Table, 17th Century Refectory Taste, English Circa 1900



DESCRIPTION

Our Stock # 10.1780

This is an extending antique dining table in the 17th century refectionary taste, English, oak circa 1900. Seats 4 - 6 and offers a generous height.

- Solid English oak displaying grain interest and wisps of medullary rays
- Good colour and a desirable aged patina in the lustrous, wax polished finish
- Ingenious hidden extension flap folds out from the centre of the table
- Planked top over frieze displaying gothic overtones
- Raised on a pair of large, cup and cover baluster legs
- Standing upon stout feet untied by a bracketed centre stretcher

A quality extending dining table. Solid joints and construction, delivered waxed, polished and ready for the home.

Search [London Fine for #10.1780](#) , or scan the QR code for more photos and details

DIMENSIONS

Max Width: 137cm (54")

Min Depth: 62cm (24.5")

Max Depth: 95cm (37.5")

Max Height: 76.25cm (30")

