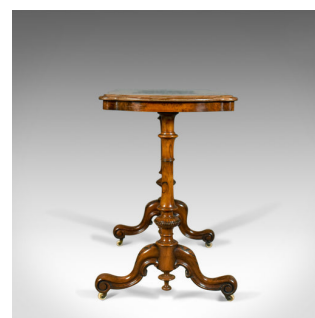


## Antique Stretcher Table, Burr Walnut, English, Victorian, Circa 1880



## DESCRIPTION

Our Stock # 10.1781

This is an antique stretcher table in burr walnut. An English, Victorian piece dating to circa 1880.

- Well figured burr walnut top with moulded edge detail
- Lustrous shine in the wax polished finish
- Shallow frieze in good proportion
- Well executed, tapering ring turned legs
- United by ring turned stretcher with central beaded trace
- Four cabriole legs feature carved acanthus leaves to the knee
- Stout scrolled toes over white ceramic castors
- Lower inverted finials completing the decoration

A good example of it's type. Solid joints and construction, delivered waxed, polished and ready for the home.

Search [London Fine for #10.1781](#) , or scan the QR code for more photos and details

## DIMENSIONS

Max Width: 97cm (38.25")

Max Depth: 51cm (20")

Max Height: 73cm (28.75")

