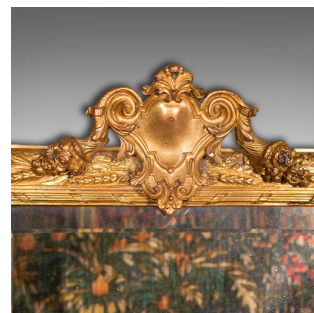


Small Antique Wall Mirror, Italian, Gilt Metal, Decorative, Victorian, C.1900



DESCRIPTION

Our Stock # 18.7637

This is a small antique wall mirror. An Italian, gilt metal decorative mirror, dating to the late Victorian period, circa 1900.

- Radiant golden tones and pleasingly ornate form
- Displaying a desirable aged patina
- Dashing gilt metal frame presents striking golden hues
- Original mirror plate with desirable light foxing
- Prominent shield-shaped surmount issuing scrolled foliate garlands
- Ornate frame decor with wheat sheaf heads in relief form
- Plume of feather emblems emanate from the mid-point to both sides
- Bracket lower corners with pierced openings show foliate heads and leaf motif
- Quality bevelled mirror presents a clear, bright reflection
- Figural winged masque to the lower frame within a distinctive bouquet of vines
- Mounting wire to rear aids ease of wall hanging

Search [London Fine for #18.7637](#), or scan the QR code for more photos and details

DIMENSIONS

Max Width: 29.5cm (11.5")
 Max Depth: 4cm (1.5")
 Max Height: 39.5cm (15.5")
 Mirror Plate Width: 17.5cm (7")
 Mirror Plate Height: 25.5cm (10")

