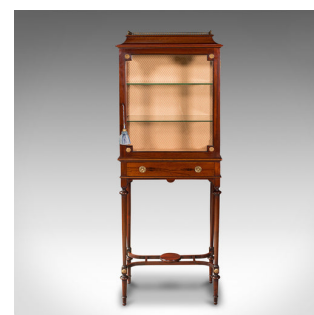


Antique Raised Pier Cabinet, English, Mahogany, Display Case, Edwardian, C.1910



DESCRIPTION

Our Stock # 18.7666
This is an antique raised pier cabinet. An English, mahogany display case on stand, dating to the Edwardian period, circa 1910.

- Delightfully presented and unusual in being upon a stand
- Displays a desirable aged patina and in very good order
- Select mahogany shows fine grain interest and rich russet hues
- Glass plate offers a clear, bright appearance and free of marks
- Brass rails help create a distinctive gallery top over a tapering crown
- Generously sized glass plate to door, decorated with foliate heads to each corner
- Inset barrel with internal locking mechanism in working order – key present
- Each side further decorated with flowerhead mounts
- Interior presents a pair of glass shelves spaced at 19.5cm (7.75") intervals
- Striking fabric lining with diamond pattern over a light golden ground
- Useful drawer to front dressed with circular drop handles over decorated backplates

Search [London Fine for #18.7666](#) , or scan the QR code for more photos and details

DIMENSIONS

- Max Width: 56cm (22")
- Max Depth: 33cm (13")
- Max Height: 157cm (61.75")
- Gallery Width: 43.5cm (17.25")
- Gallery Depth: 26.5cm (10.5")
- Shelf Width: 48.5cm (19")
- Shelf Depth: 26.5cm (10.5")
- Shelf Heights: 19.5cm (7.75")

