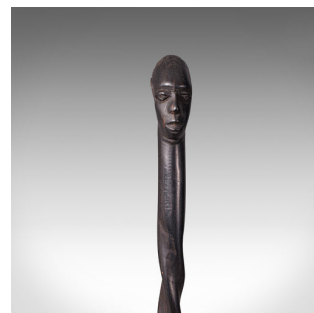


Antique Carved Walking Cane, African, Ebony, Tribal Stick, Figure, Victorian



DESCRIPTION

Our Stock # 18.7735

This is an antique carved walking cane. An African, ebony tribal stick with figural male mask, dating to the late Victorian period, circa 1900.

- Wonderful tribal cane with pleasing detail
- Displays a desirable aged patina throughout
- Ebony cane shows appealing dark tones
- Male figure mask to pommel feels tactile in the hand
- Fascinating twist carving to the body

This is a distinctive antique carved walking cane, with the striking ebony tones and carved detail providing tribal interest. Delivered polished and ready to enjoy.

Search [London Fine for #18.7735](#), or scan the QR code for more photos and details

DIMENSIONS

Max Width: 2.5cm (1")

Max Depth: 4cm (1.5")

Max Height: 72.5cm (28.5")

