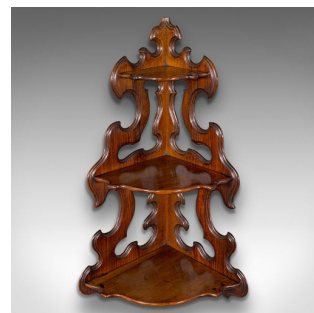
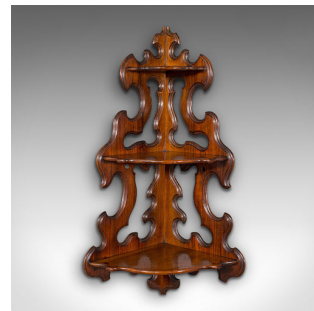


Antique 3 Tier Hanging Whatnot, English, Rosewood, Corner Wall Shelf, Victorian



DESCRIPTION

Our Stock # 18.7670

This is an antique three-tier hanging whatnot. An English, rosewood corner wall shelf or candle bracket, dating to the early Victorian period, circa 1850.

- Distinctive wall mounted corner whatnot with striking form
- Displays a desirable aged patina throughout
- Select rosewood presents fine grain interest and rich caramel hues
- Graced with a quality wax polish finish
- Arranged as three shelves - ideal for small ornaments or tea lights
- Inter-directional form for mounting either way as desired
- Eye-catching pierced stocks with sinuous, tiered edges
- Pair of mounting holes aid hanging in the corner of your room

This is a delightful antique three-tier hanging whatnot, with superb craved and pierced form and of versatile inter-directional craftsmanship. Solid joints and construction, delivered waxed, polished and ready for the home.

Search [London Fine for #18.7670](#) , or scan the QR code for more photos and details

DIMENSIONS

Max Width: 37cm (14.5")

Max Depth: 27cm (10.75")

Max Height: 70cm (27.5")

