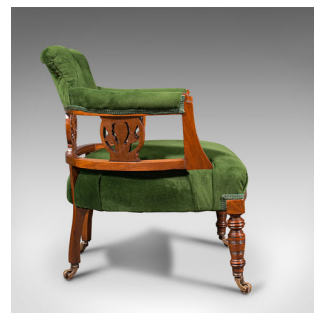


## Antique Tub Chair, English, Velvet, Mahogany, Elbow, Seat, Edwardian, Circa 1910



### DESCRIPTION

Our Stock # 18.7733

This is an antique tub chair. An English, velvet over mahogany elbow chair, dating to the Edwardian period, circa 1910.

- Eye-catching colour and pleasingly diminutive in form
- Displays a desirable aged patina throughout
- Benefits from a recent professional reupholstering in quality velvet
- Mahogany carved frame shows fine grain interest and rich caramel hues
- Graceful demi-lune backrest with buttoned cushion continuing to the dressed arms
- Pierced carved roundels unite the middle and lower rail with foliate motif
- Striking emerald green velvet accentuated with lighter green brocade trim
- Pair of ring turned baluster legs to front, with gently splayed legs to rear
- Riding smoothly upon a set of four brass castors

This is an appealing antique tub chair, with superb colour and pleasing craftsmanship. Solid joints and construction. Delivered waxed, polished and ready to enjoy.

Search [London Fine for #18.7733](#) , or scan the QR code for more photos and details

### DIMENSIONS

Max Width: 63cm (24.75")  
 Max Depth: 61.5cm (24.25")  
 Max Height: 69.5cm (27.25")  
 Seat Width: 52.5cm (20.75")  
 Seat Depth: 52.5cm (20.75")  
 Seat Height: 37cm (14.5")

