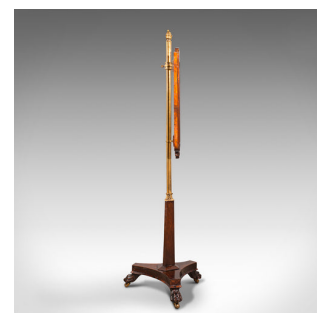
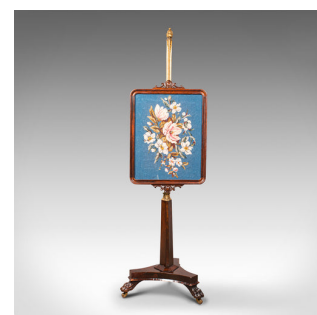
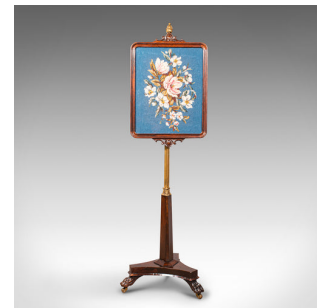


Antique Fireside Pole Screen, English, Rosewood, Needlepoint, William IV, C.1830



DESCRIPTION

Our Stock # 18.7722

This is an antique fireside pole screen. An English, Rosewood and ormolu adjustable fire screen with needlepoint panel, dating to the William IV period, circa 1830.

- Attractive adjustable fireside pole screen
- Displays a desirable aged patina and in good order
- Select Rosewood beams with beautiful russet hues
- Quality needlepoint tapestry with rich colour palette behind glass panel
- Long gilt riser topped with an ormolu baluster finial
- Screen framed within narrow bezel with gently arched corners
- Eye-catching tapestry displays a bouquet of flowers with fine detail
- Screen height adjusts through 72cm (28.25")
- Tapering support base meets the triform stand with tapered edge moulding
- Stands upon excellent hairy paw feet and rides smoothly upon brass castors

Search [London Fine for #18.7722](#) , or scan the QR code for more photos and details

DIMENSIONS

- Max Width: 46cm (18")
- Max Depth: 41.5cm (16.25")
- Max Height: 145cm (57")
- Screen Width: 40.5cm (16")
- Screen Height: 60cm (23.5")
- Adjustment Range: 72cm (28.25")

LIST PRICE

£1,825.00

