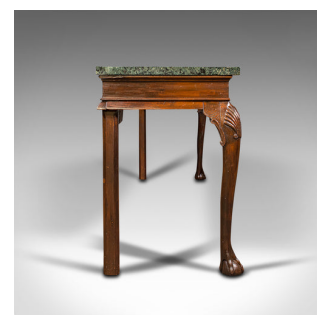


## Large Antique Console Table, French, Pine, Marble, Serving, Victorian, C.1900



## DESCRIPTION

Our Stock # 18.7778

This is a large antique console table. A French, pine and marble serving table, dating to the Victorian period and later, circa 1900.

- Impressively heavy table with refined carved detail
- Displays a desirable aged patina throughout
- Dark stained pine presents deep chestnut hues
- Belgian marble plinth top shows mottled green hues
- The thick, 3cm (1.25") top offers a cool, tactile feel to the hand
- Decorated along the front apron with a pronounced central shell carving
- Shell carved knees decorate the pair of cabriole legs to the front
- Pair of square section legs to the rear sit neatly beneath the whole

This is a supremely heavy antique console table, with great colour and pleasing marble top. Ideal for placement along the edge of the room, the 360-degree finish lends the table to central room placement if required. Solid joints and construction. Delivered waxed, polished and ready for the home.

Search [London Fine for #18.7778](#), or scan the QR code for more photos and details

## DIMENSIONS

Max Width: 229.5cm (90.25")

Max Depth: 51cm (20")

Max Height: 75.5cm (29.75")

Top Width: 224.5cm (88.5")

Kneehole Height: 60.5cm (23.75")

