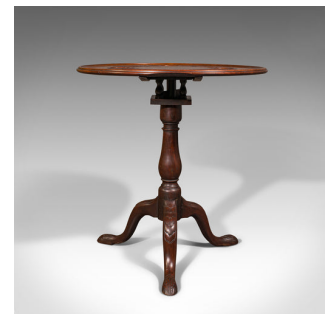


## Antique Occasional Table, English, Walnut, Tilt Top, James Shoolbred, Victorian



### DESCRIPTION

Our Stock # 18.7635

This is an antique occasional table. An English, walnut tilt-top table on birdcage mount by James Shoolbred, dating to the Victorian period, circa 1880.

- Delightful side table with attractive carved top
- Displays a desirable aged patina and in good order
- Select walnut shows fine grain interest and rich caramel hues
- Presented beneath a quality wax polish finish
- Carved centrepiece to table with four medallions united by concentric rings
- Continuous tiered edge with shallow lip to table surface
- Tilt top rotates smoothly for occasional use, secured by circular sliding clasp to rear
- Articulated upon a rotating tilt support with birdcage mount
- Turned baluster riser stands about a trio of broad cabriole legs
- Carved knees arch gracefully over prominent, decorated toes
- Maker's mark concealed beneath the birdcage mount, visible when tilted

Search [London Fine for #18.7635](#) , or scan the QR code for more photos and details

### DIMENSIONS

Max Width: 65cm (25.5")  
 Max Depth: 65cm (25.5")  
 Max Height: 68.5cm (27")  
 Tilted Width: 65cm (25.5")  
 Tilted Depth: 45cm (17.75")  
 Tilted Height: 105.5cm (41.5")

