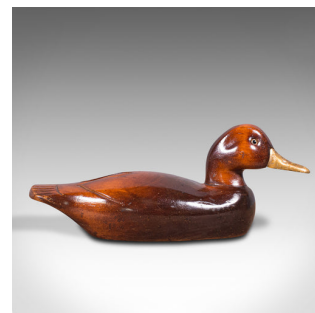
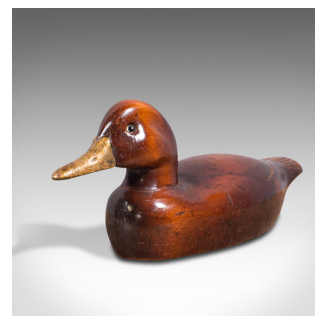
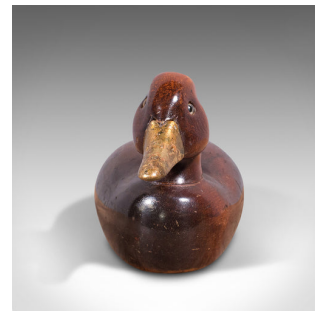


Antique Decoy Duck, English, Carved Mahogany Figure, Gilt, Edwardian, Circa 1910



DESCRIPTION

Our Stock # 18.7772

This is an antique decoy duck. An English, carved mahogany Mallard figure with gilt beak, dating to the Edwardian period, circa 1910.

- Charming display piece for the home or outdoor setting
- Displays a desirable aged patina and in good order
- The russet coloured stock shows fine grain interest beneath a wax polish finish
- Gilt finished beak provides an attractive contrast to the body
- Small beaded eyes and gently carved feather detail add further appeal

This is a fascinating antique decoy duck, ideally suited as a display ornament or outdoors alongside a well-tended pond. For those with an interest in navigating the waterways, it could also grace a narrow boat's prow. Delivered polished and ready to enjoy.

Search [London Fine for #18.7772](#) , or scan the QR code for more photos and details

DIMENSIONS

Max Width: 12cm (4.75")

Max Depth: 34cm (13.5")

Max Height: 14cm (5.5")

