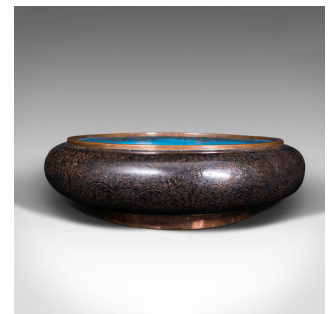


Large Antique Cloisonne Bowl, Chinese, Ceramic, Fishbowl, Serving Dish, C.1900



DESCRIPTION

Our Stock # 18.7749

This is a large antique cloisonne bowl. A Chinese, ceramic fishbowl or serving dish, dating to the late Victorian period, circa 1900.

- Striking example of cloisonne with vibrant colour palette
- Displays a desirable aged patina throughout
- Attractive ceramic form with gently chamfered and rolled edges
- Ornate cloisonne cloud forms and motif accentuated in gold against a black ground
- Wide opening presents a bright blue interior with further cloud form pattern
- Decorated with charming Oriental fish, arranged as eight smaller fish around a larger central example
- Gilt finished, the rolled rim adds visual contrast to the whole
- Light blue base an oasis of colour against the black body

This is a superb antique cloisonne bowl, graced with the hallmarks of the taste and rich in colour. Delivered polished and ready to display.

Search [London Fine for #18.7749](#), or scan the QR code for more photos and details

DIMENSIONS

Max Width: 29.5cm (11.5")

Max Depth: 29.5cm (11.5")

Max Height: 8.5cm (3.25")

Opening Diameter: 23cm (9")

