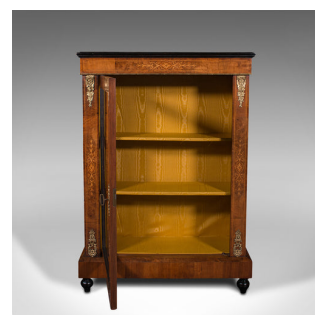


Antique Pier Cabinet, English, Walnut, Inlay, Display Cupboard, Victorian, 1870



DESCRIPTION

Our Stock # 18.7813

This is an antique pier cabinet. An English, walnut and boxwood inlaid display cupboard, dating to the Victorian period, circa 1870.

- Delightful cabinet, presenting beautifully with fine colour
- Displaying a desirable aged patina throughout
- Select walnut shows fine grain interest and rich caramel hues
- Lighter boxwood stringing contrasts perfectly
- Wide top with ebonised edges stands above the whole
- Front fascia accentuated with superb scrolled foliate marquetry
 - Bright glazed door dressed with ormolu lock escutcheon – in working order, key present
- The interior upholstered with a striking saffron yellow silk cotton fabric
- Arranged usefully as a pair of graduated shelves
- Adorned with ormolu mounts to each corner, framing the cabinet door
- Standing upon four ebonised bun feet beneath a plinth foot

Search [London Fine for #18.7813](#) , or scan the QR code for more photos and details

DIMENSIONS

- Max Width: 75cm (29.5")
- Max Depth: 32cm (12.5")
- Max Height: 106.5cm (42")
- Shelf Width: 67cm (26.5")
- Shelf Depth: 18cm (7")
- Shelf Heights: 35.5cm (14") 22cm (8.75") 27cm (10.75")

