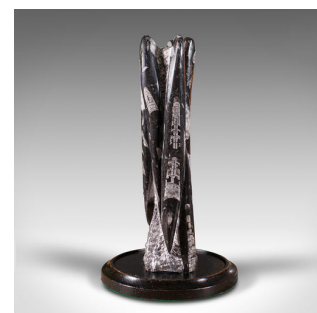
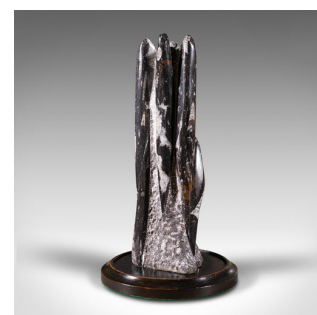


Antique Decorative Granite Formation, English, Geological, Display, Edwardian



**DESCRIPTION**

Our Stock # 18.7815

This is an antique decorative granite formation. An English, polished geological display specimen, dating to the Edwardian period, circa 1910 and much, much earlier.

- Superb natural formation presented for ornamental display
- In very good order throughout with desirable aged patina
- Cosmic Black granite offers wonderful tonality and patterns
- Accentuated with a palette of deep blacks, greys and reddish browns
- Mounted upon an ebonised plinth, dressed with protective base

This is a distinctive antique decorative granite formation, ideal for collectors of natural history or geological interest. Delivered polished and ready for display.

Search [London Fine for #18.7815](#) , or scan the QR code for more photos and details

**DIMENSIONS**

Max Width: 21cm (8.25")

Max Depth: 21cm (8.25")

Max Height: 37.5cm (14.75")

Weight: 4.44kg (9.78 lb)

