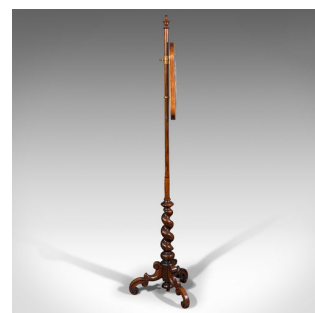
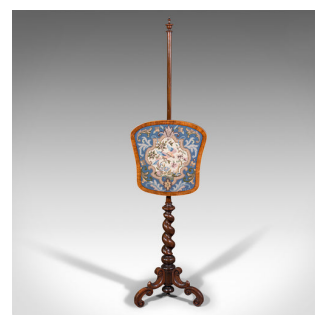


Antique Pole Screen, English, Needlepoint, Fire Shield, Tapestry, Regency,  
1820



**DESCRIPTION**

Our Stock # 18.7799

This is an antique pole screen. An English, rosewood adjustable needlepoint tapestry fire shield, dating to the Regency period, circa 1820.

- Superb elegance and exuding quality
- Displays a desirable aged patina and in good order
- Select stocks show fine grain interest and rich russet hues
- Delightful foliate needlepoint tapestry a treat
- Shield shaped screen adjusts through 76cm (30")
- Rises upon a slender pole topped with turned finial
- Distinguished by a striking barley twist carved support
- Raised upon a triform of double scroll toes with drop pendant finial to centre

This is a fascinating antique pole screen, offering generous adjustment ideal for any fireside. Solid joints and construction, delivered waxed, polished and ready for the home.

Search [London Fine for #18.7799](#) , or scan the QR code for more photos and details

**DIMENSIONS**

Max Width: 38.5cm (15.25")  
 Max Depth: 34cm (13.5")  
 Max Height: 150.5cm (59.25")  
 Adjustment Range: 76cm (30")

