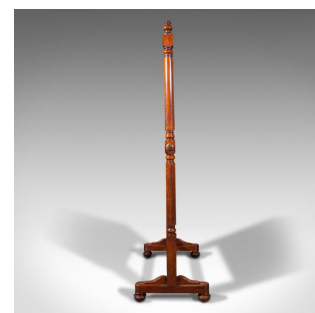
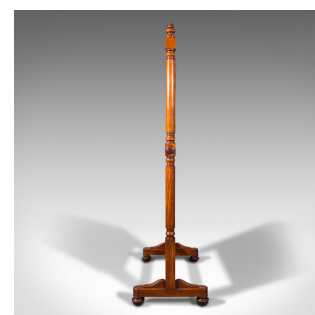
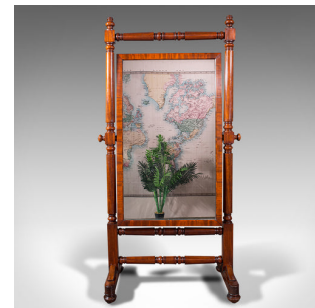


Grand Antique Cheval Mirror, English, Dressing, Country House, Victorian, C.1880



**DESCRIPTION**

Our Stock # 18.7843

This is a grand antique cheval mirror. An English, mahogany dressing mirror of country house proportion, dating to the Victorian period, circa 1880.

- Of superior proportion and craftsmanship throughout
- Displays a desirable aged patina
- Select stocks beam with caramel hues and fine grain interest
- Original mirror plate presents a desirable light foxing
- Set within a prominent frame, rotating upon its axis
- Twin finials adorn the upper corners, united by a turned rail
- Broad frame encloses the mirror with a clear, bright reflection
- Standing upon a pair of broad trestle legs above four bun feet with inset brass castors
- Unmarked as such, but of a quality on par with a Gillow & Co, Lancaster piece
- This superb mirror befitting of a fine dressing room or grand institution

Search [London Fine for #18.7843](#) , or scan the QR code for more photos and details

**DIMENSIONS**

- Max Width: 97.5cm (38.5")
- Max Depth: 52.5cm (20.75")
- Max Height: 188.5cm (74.25")
- Mirror Plate Width: 62.5cm (24.5")
- Mirror Plate Height: 108.5cm (42.75")

**LIST PRICE**

£3,950.00

