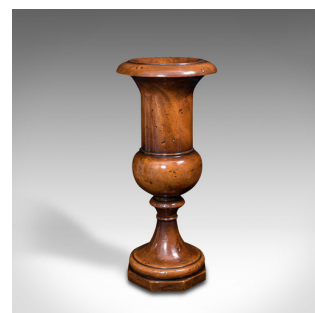
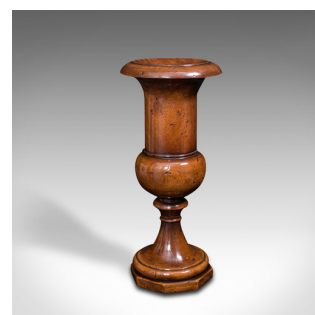
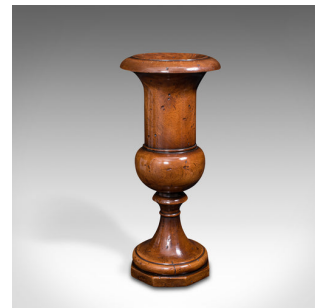


Large Antique Dried Stem Vase, French, Beech, Display Urn, Victorian, Circa 1900



DESCRIPTION

Our Stock # 18.7838

This is a large antique dried stem vase. A French, turned beech display urn, dating to the late Victorian period, circa 1900.

- A delight of antique French wood turning - a showcase piece
- Displays a desirable aged patina throughout
- Select beech shows fine grain interest
- Rich caramel hues beam beneath a wax polish finish
- Wonderfully rolled top with gentle chamfering into a 6.5cm (2.5") diameter opening
- Turned body with globular form catches the light beautifully
- Supported by a tapering stem with ring spun collar
- Stood upon an octagonal base, dressed with a saffron leather protective pad

This is a striking antique dried stem vase. Accentuate your arrangements with this superior example of French craftsmanship. Delivered waxed, polished and ready to display.

Search [London Fine for #18.7838](#) , or scan the QR code for more photos and details

DIMENSIONS

Max Width: 22cm (8.75")

Max Depth: 22cm (8.75")

Max Height: 50.5cm (20")

Opening Diameter: 6.5cm (2.5")

