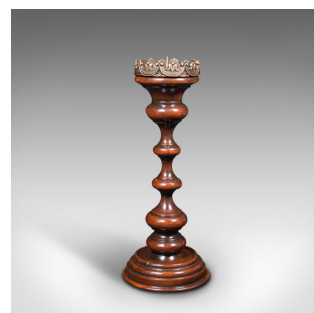
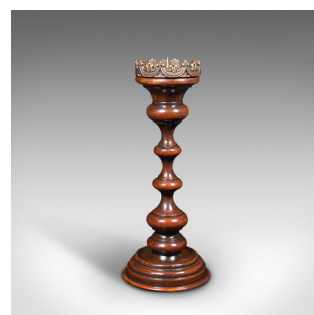
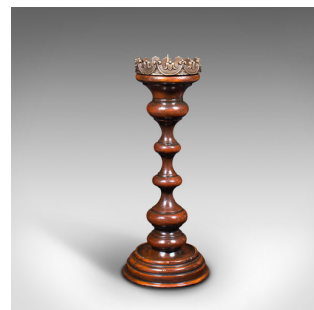


## Tall Vintage Centrepiece Torchere, French, Beech, Candlestick, Ecclesiastical



### DESCRIPTION

Our Stock # 18.7839

This is a tall vintage centrepiece torchere. A French, beech candlestick with ecclesiastical taste, dating to the mid 20th century, circa 1960.

- Skilfully turned torchere for illuminating intimate gatherings
- Displays a desirable aged patina and in good order
- Select beech shows fine grain interest throughout
- Deep caramel hues radiate beneath a wax polish finish
- Broad candle nozzle to top - suitable for candles up to 12cm diameter (4.75")
- Candle spike to centre adds stability within the wax
- Sash garlands decorate the cast gilt metal rim
- Baluster turned support with sinuous lobes
- Concentric turned base tapers to the leather dressed foot

This is a delightful vintage centrepiece torchere, with quality wood turned base and dashing gilt metal mount. Set to light up any party or festive occasion. Delivered waxed, polished and ready to display.

Search [London Fine for #18.7839](#), or scan the QR code for more photos and details

### DIMENSIONS

Max Width: 18.5cm (7.25")  
 Max Depth: 18.5cm (7.25")  
 Max Height: 46.5cm (18.25")  
 Candle Nozzle Diameter: 12cm (4.75")

### LIST PRICE

£585.00

