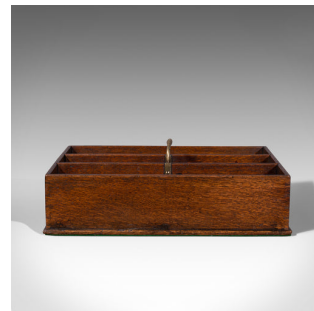


Antique Butler's Carry Tray, English, Oak, Serving, Cutlery, Georgian, C.1800



DESCRIPTION

Our Stock # 18.7818

This is an antique butler's carry tray. An English, oak serving or cutlery tray, dating to the Georgian period, circa 1800.

- Arranged as three generously sized, useful compartments
- Displays a desirable aged patina and in good order
- Select oak shows fine grain interest and rich caramel hues
- Brass handle offers a tactile feel in the hand
- The base dressed with a quality, emerald green baize

This is a charming antique butler's carry tray, ideal for carrying silver cleaning wares, a morning paper or breakfast items to the master or guest bedrooms. Solid joints and construction, delivered waxed, polished and ready to serve.

Search [London Fine for #18.7818](#) , or scan the QR code for more photos and details

DIMENSIONS

Max Width: 39cm (15.25")
Max Depth: 28.5cm (11.25")
Max Height: 13.5cm (5.25")
Compartment Width: 36.5cm (14.25")
Compartment Depth: 8.5cm (3.25")

