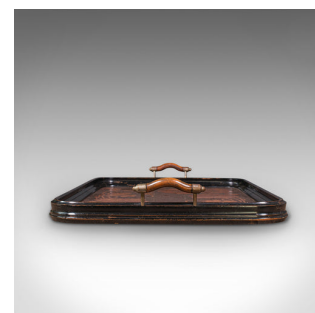
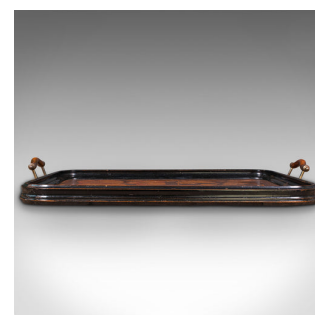


Antique Decorative Serving Tray, English, Beech, Art Nouveau, Edwardian, 1909



DESCRIPTION

Our Stock # 18.7865

This is an antique decorative serving tray. An English, beech and mahogany tray with hand-finished detail in the Art Nouveau taste, dated to the late Edwardian period, 1909.

- Appealing example of Art Nouveau with eye-catching finish
- Displays a desirable aged patina and in good order
- Slim rolled edges ebonised to a deep black hue
- Beech and cast metal handles with serpentine form to either side
- Ornate fruitwood inlay with large poppy heads and leaf detail
- Set against a beech background with distinctive hammered finish
- Decorated base with engraved star pattern and diamond motif
- Diamonds hand engraved and read 'Whitchurch, September 1909'

This is a fascinating antique decorative serving tray, with hand finished appeal and attractive detail. Delivered waxed, polished and ready to serve afternoon tea or aperitif.

Search [London Fine for #18.7865](#) , or scan the QR code for more photos and details

DIMENSIONS

- Max Width: 56cm (22")
- Max Depth: 38.5cm (15.25")
- Max Height: 6.5cm (2.5")
- Internal Width: 47.5cm (18.75")
- Internal Depth: 33cm (13")
- Internal Height to Lip: 2.5cm (1")

