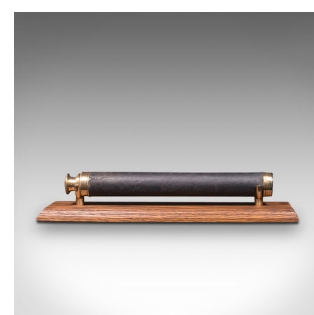
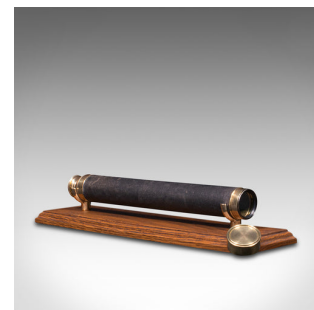




Antique 4 Draw Telescope, English, Brass, Terrestrial, Astronomical, Victorian



DESCRIPTION

Our Stock # 18.7933

This is an antique 4 draw telescope. An English, leather and brass terrestrial or astronomical refractor, dating to the late Victorian period, circa 1900.

Perfect for bird watching, landscape appreciation, wildlife, or maritime observation. Equally suitable for observing the night sky.

- Impressive proportion when fully drawn
- Displaying a desirable aged patina, some light marks commensurate with use
- Primary barrel dressed with original leather cover, some light wear
- Polished brass draw barrels show bright golden tones
- Presenting a clear, sharp optical performance with a 30mm (1.25") primary objective lens

Complete with

- Complete with push type brass dust cover to front
- Sliding dust cover to the flared eyecup
- Supplied with a London Fine oak and brass 'Captain's Stand' for display

This is a large antique 4 draw telescope, showing fine late Victorian craftsmanship and period appeal. Delivered polished and ready for use or display.

DIMENSIONS

Closed Length: 32.5cm (12.75")

Fully Drawn Length: 108cm (42.5")

Objective Diameter: 30mm (1.25")



Search [London Fine](#) for #18.7933, or scan the QR code for more photos and details

+44 (0) 207 1833 511

London Fine Ltd
The Antique Village
The Old Whiteways Cider Factory
Hele, Devon, EX5 4PW

sales@londonfine.co.uk
E. & O. E.