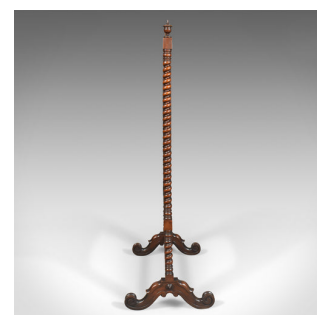


Large Antique Fire Screen, Needlepoint Tapestry Panel, Walnut Frame, Circa 1850



DESCRIPTION

Our Stock # 10.1789

This is a large antique fire screen with needlepoint tapestry panel in a walnut frame, dating to circa 1850.

- Superb needlepoint tapestry panel
- Retaining good colour and detail, noticeably in the clouds
- A farmhouse scene of a family watching kittens play
- The reverse a patterned silk cotton weave
- Mounted in a well executed turned frame
- Barley twist risers and stretcher
- Capped with urn finials and pierced, fret mounts
- Standing upon four cabriole legs with carved knees and scrolled toes

A fine example with much interest. Solid joints and construction, delivered waxed, polished and ready for the home.

Search [London Fine for #10.1789](#) , or scan the QR code for more photos and details

DIMENSIONS

Max Width: 79cm (31")

Max Depth: 40.75cm (16")

Max Height: 122cm (48")

