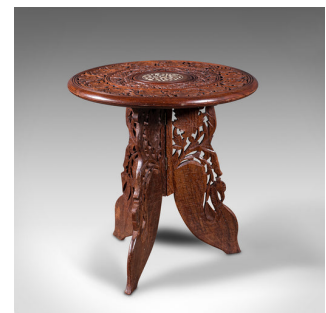
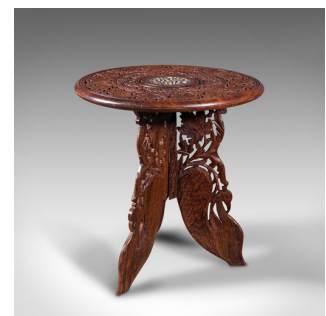


## Antique Circular Side Table, Anglo-Indian, Fold Away, Lamp, Wine, Moorish Taste



### DESCRIPTION

Our Stock # 18.7887

This is an antique circular side table. An Anglo-Indian, Chinese Rosewood fold away lamp or wine table with Moorish taste, dating to the early 20th century, circa 1920.

- Exotic taste with fascinating detail and finish
- Displays a desirable aged patina and in good order
- Select stocks delightfully carved and pierced
- Rich caramel hues beneath a wax polish finish
- Circular topped with rolled edge and quality leaf detail to the circumference
- Central medallion presented as a stone inlay with foliate scene
- Elaborately shaped trio of legs, profusely decorated with pierced floral motif
- In two pieces, the legs rest securely within a guide to the reverse of the top

This is a fascinating antique circular side table, with useful folding form for occasional use. Rich in Moorish influence with quality craftsmanship. Solid joints and construction, delivered waxed, polished and ready for the home.

Search [London Fine for #18.7887](#), or scan the QR code for more photos and details

### DIMENSIONS

Max Width: 37.5cm (14.75")

Max Depth: 37.5cm (14.75")

Max Height: 39.5cm (15.5")

### LIST PRICE

£585.00

