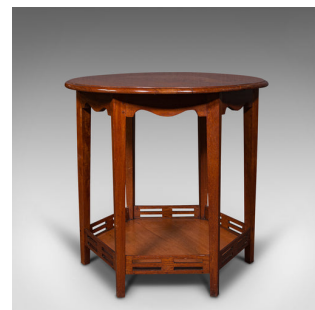


## Antique Circular Occasional Table, English, Walnut, Lamp, Hexagonal, Edwardian



### DESCRIPTION

Our Stock # 18.7953

This is an antique circular occasional table. An English, walnut lamp or side table with hexagonal base, dating to the Edwardian period, circa 1910.

- Presenting a distinctive aesthetic, with the juxtaposition of circular and hexagonal forms
- Displays a desirable aged patina throughout
- Select walnut stocks show an appealing, fine grain interest
- Wonderfully deep caramel hues radiate beneath a wax polish finish
- Broad circular top with chamfered rolled edge form
- Attractive sash aprons unite each of the gently tapered legs
- Useful undertier with pierced fretwork edges
- Raised upon six square section legs

This is a superb antique circular occasional table, with quality finish and appealing craftsmanship. Presenting the circular and hexagonal forms with an eye for detail, this table will enhance any room. Solid joints and construction, delivered waxed, polished and ready for the home.

### DIMENSIONS

Max Width: 70.5cm (27.75")  
Max Depth: 70.5cm (27.75")  
Max Height: 68.5cm (27")  
Undertier Width: 57cm (22.5")  
Undertier Depth: 52.5cm (20.75")  
Undertier Height: 58cm (22.75")



Search [London Fine for #18.7953](#), or scan the QR code for more photos and details

+44 (0) 207 1833 511

London Fine Ltd  
The Antique Village  
The Old Whiteways Cider Factory  
Hele, Devon, EX5 4PW

sales@londonfine.co.uk  
E. & O. E.