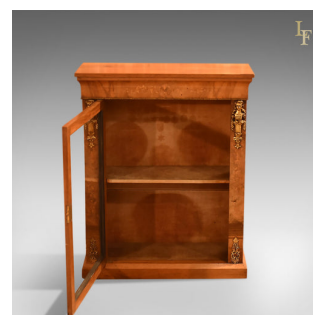


Antique Pier Cabinet, Victorian Burr Walnut c.1850



DESCRIPTION

Our Stock # 10.1347

This is an antique pier cabinet dating to the early Victorian period c.1850.

Raised on a continuous chamfered plinth, this proud pier cabinet displays wonderful grain detail in the burr walnut polished finish. Intricate inlaid boxwood marquetry in ribbons of foliate garlands sinuously decorate the flared frieze footed with a band of ormolu.

The ormolu mounts to the upper side panels depict a bust with swags atop an elaborate bracket mount, the applique decoration to the foot framing boxwood marquetry foliate garlands in keeping with the frieze detail.

The glazed door features an attractive quarter round finish to the upper corners and is framed with a parallel boxwood string highlight. The key locates within an asymmetric foliate escutcheon and acts as a pull.

Inside the original velvet lining offers a forgiving environment in which to display.

A fine example of its type with solid joints and construction, delivered waxed, polished and ready for the home.

Search [London Fine for #10.1347](#) , or scan the QR code for more photos and details

DIMENSIONS

Max Width: 79.5cm (31.25")

Max Depth: 31cm (12.25")

Max Height: 98.5cm (38.75")

