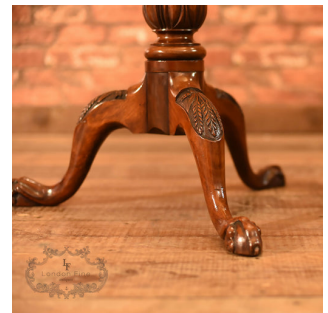


## Early Victorian Mahogany Torchere, Plant Stand c.1850



## DESCRIPTION

Our Stock # LFA-1384 This is an antique plant stand or torchere dating to the early Victorian era, c.1850. Raised on a tripod of cabriole legs featuring quality carved wheatsheaf to the knees and terminating in slender ball and claw feet, the substantial post is footed with a tulip mount above which a helical turning rises into an acanthus carving. The smooth dished top provides a stable surface and is attractively decorated with dentil moulding beneath the rim. The mahogany has a deep, lustrous shine and the piece proportion, stability and strength. Delivered waxed, polished and ready for the home.

Search [London Fine](#) for #LFA-1384 or scan the QR code for more photos and details

## DIMENSIONS

Base Max Width: 51cm (20")  
Top Diameter: 29cm (11.5")  
Max Height: 110.5cm (43.5")

