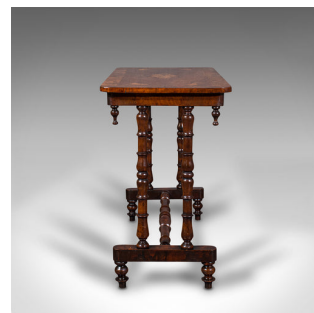


Antique Console Table, English, Walnut, Decorative, Side, Occasional, Regency



DESCRIPTION

Our Stock # 18.7893

This is an antique console table. An English, walnut and boxwood inlaid decorative side or occasional table, dating to the Regency period, circa 1830.

- Delicate craftsmanship and attractive finish
- Displays a desirable aged patina throughout
- Select walnut shows fine grain interest and rich russet hues
- Quality boxwood inlays beneath a wax polish finish
- Beautiful top surface decorated with a foliate centre inlay
- Each corner accentuated with a butterfly motif
- Discrete stringing details the table edge, with a pleasingly figured border
- Shallow apron hosts a quartet of drop pendant finials to the ends
- Slender, turned baluster supports uniting the upper and lower portions
- Wide turned stretcher marries the right and left trestle foot
- Raised upon four cylindrical feet with carved bulb form

DIMENSIONS

Max Width: 86cm (33.75")

Max Depth: 48.5cm (19")

Max Height: 70cm (27.5")

Search [London Fine for #18.7893](#), or scan the QR code for more photos and details

