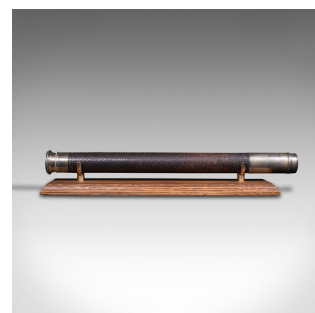


Antique Officer Of The Watch Telescope, German, Single Draw, Voigtlander, C.1910



DESCRIPTION

Our Stock # 18.7932

This is an antique officer of the watch telescope. A German, nickel and leather single draw refractor by Voigtlander and Sohn, dating to the Edwardian period, circa 1910.

Perfect for bird watching, landscape appreciation, wildlife, or maritime observation. Equally suitable for observing the night sky.

- Fascinating example from a renowned optical specialist
- 'Officer of the Watch' telescopes were commonly used on board ships from the 19th century onwards
- Displaying a desirable aged patina with some light wear commensurate with age
- Silvered nickel offering bright, reflective tones - some light tarnish
- Clear, bright objective with 30mm diameter
- Front element with some protection from recessed lens
- Primary barrel dressed in a patinated leather cover
- Flared eye-cup with swivel dust cover and superb, concentric ring finish
- The draw tube engraved with the Voigtlander and Sohn A.G name
- Further reads the town name of Braunschweig

Search [London Fine for #18.7932](#), or scan the QR code for more photos and details

DIMENSIONS

Closed Length: 43.5cm (17.25")

Fully Drawn Length: 64cm (25.25")

Objective lens: 30mm (1.25")

