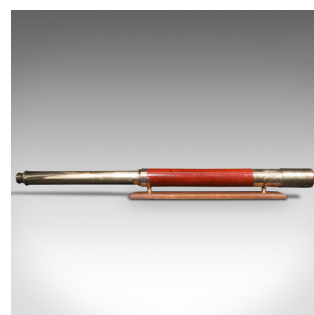
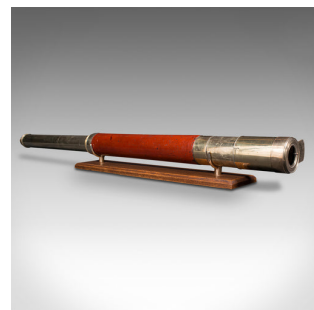


Large Antique Telescope, English, Single Draw, Astronomical, Dollond, Victorian



DESCRIPTION

Our Stock # 18.7968

This is a large antique telescope. An English, single draw refractor for terrestrial or astronomical use by Dollond of London, dating to the early Victorian period, circa 1850. Perfect for bird watching, landscape appreciation, wildlife stalking, or maritime observation. Equally suitable for observing the night sky.

- Fascinating 'day or night' example from the long-standing Dollond
- Good optics presenting a clear, sharp performance
- Broad fruitwood primary barrel in good order with some light wear
- Draws with a firm action and focuses easily
- Generously sized 35mm (1.5") achromatic objective behind a removable, sliding dust cap

- Dashing flared eyecup with swivel cover and fine knurled detail to edges
- Supplied with a London Fine oak and brass 'Captain's Stand' for display
- Engraved to draw tube with 'Dollond, London - Day or Night'

This is a charming antique Dollond telescope, and as good to use today as it was nearly two hundred years ago. Delivered polished and ready to display or enjoy.

DIMENSIONS

Closed Length: 53.5cm (21")
 Fully Drawn Length: 98.5cm (38.75")
 Objective Glass Diameter: 3.5cm (1.5")



Search [London Fine for #18.7968](#), or scan the QR code for more photos and details

+44 (0) 207 1833 511

London Fine Ltd
 The Antique Village
 The Old Whiteways Cider Factory
 Hele, Devon, EX5 4PW

sales@londonfine.co.uk
 E. & O. E.