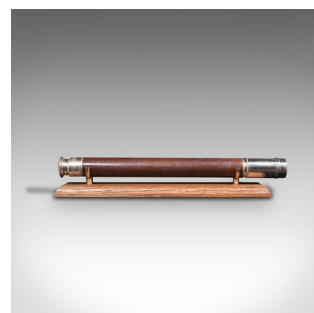
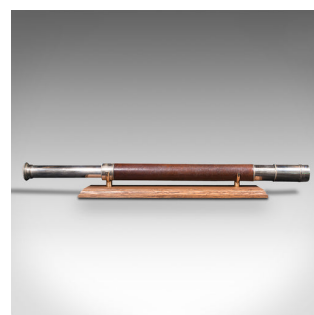
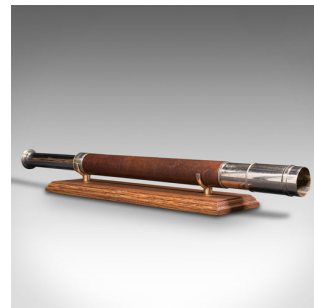


Antique Officer of the Watch Telescope, English, Terrestrial, Astronomical, Ross



DESCRIPTION

Our Stock # 18.7973

This is an antique officer of the watch telescope. An English, leather and nickel silver single draw refractor for terrestrial or astronomical use, by Ross of London, circa 1920.

Perfect for bird watching, landscape appreciation, wildlife, or maritime observation. Equally suitable for observing the night sky.

- Delightful example from a renowned London optical specialist
- 'Officer of the Watch' telescopes were commonly used on board ships from the 19th century onwards
- Displays a desirable aged patina with some light wear commensurate with age
- Silvered nickel offering bright, reflective tones
- Clear, bright objective with 30mm diameter
- Primary barrel dressed in a tactile, chestnut coloured leather cover
- Flared eye-cup with swivel dust cover and superb, concentric ring finish
- The draw tube engraved with Ross, London 62198
- Supplied with a London Fine oak and brass 'Captain's Stand' for display

Search [London Fine for #18.7973](#) , or scan the QR code for more photos and details

DIMENSIONS

Closed Length: 43cm (17")

Fully Drawn Length: 62.5cm (24.5")

Primary Objective Diameter: 30mm (1.25")

LIST PRICE

£985.00

