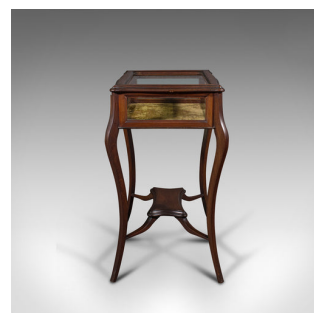


Antique Bijouterie Table, English, Display Case, Showcase, Stand, Edwardian



DESCRIPTION

Our Stock # 18.8026

This is an antique bijouterie table. An English, mahogany and glass display case, dating to the Edwardian period, circa 1910.

- Fascinating Edwardian table with appealing forms
- Displays a desirable aged patina and in good order
- Quality stocks resplendent in deep russet hues
- Fine grain interest and serpentine detail throughout
- Glass display vitrine in good, original order with inset lock – key absent
- Glazed lid with tiered edge carvings and shaped corners
- Opens smoothly, coming to a natural rest in the upright position
- Dashing interior lined with a saffron yellow velvet fabric
- Clear, bright showcase with plate glass to each side
- Tall, serpentine cabriole legs with pronounced knees at canted angles
- Useful under-tier united to the legs with shaped stretcher rails

Search [London Fine for #18.8026](#) , or scan the QR code for more photos and details

DIMENSIONS

Max Width: 56.5cm (22.25")
 Max Depth: 40cm (15.75")
 Max Height: 77cm (30.25")
 Display Area Width: 50.5cm (20")
 Display Area Depth: 34.5cm (13.5")
 Display Area Height: 12.5cm (5")
 Under-tier Width: 30cm (11.75")
 Under-tier Depth: 13cm (5")
 Under-tier Height: 36.5cm (14.25")

