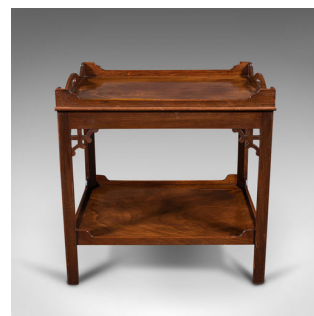


Vintage Serving Tray Table, English, Afternoon Tea, Stand, Chippendale Revival



DESCRIPTION

Our Stock # 18.8002

This is a quality vintage serving tray table. An English, mahogany afternoon tea or drink's stand in the Chippendale manner, dating to the late 20th century, circa 1970.

- Appreciable late 20th century quality with Chippendale influence
- Displays a desirable aged patina and in good order
- Select stocks show fine grain interest throughout
- Rich russet hues beam beneath a wax polish finish
- Removable tray a perfect aid to serving afternoon tea or spirits
- Carved tray edge with a pair of butler's grasps for ease of serving
- Prominent corner fan brackets with pierced fretwork above a generous under-tier
- Raised upon four stile legs with canted inner profiles to toe

This is a quality vintage tray table, with an appealing finish in the manner of Chippendale furniture. Solid joints and construction, delivered waxed, polished and ready for the home.

Search [London Fine for #18.8002](#) , or scan the QR code for more photos and details

DIMENSIONS

Max Width: 60cm (23.5")
Max Depth: 50cm (19.75")
Max Height: 56.5cm (22.25")
Tray Surface Width: 57.5cm (22.75")
Tray Surface Depth: 47.5cm (18.75")

LIST PRICE

£795.00

