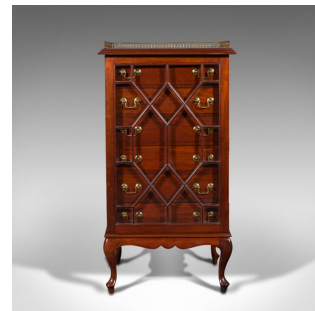


Antique Glazed Specimen Cabinet, English, Tallboy, Chest of Drawers, Victorian



DESCRIPTION

Our Stock # 18.8073

This is an antique glazed specimen cabinet. An English, mahogany tallboy chest of drawers, dating to the Victorian period, circa 1900.

- Fascinating and unusual glazed chest of drawers, ideal for collectors
- Displays a desirable aged patina throughout
- Quality stocks exude grain interest and rich russet hues
- Eighteen pane astragal glazed door encloses a later suite of six fitted drawers
- Attractive brass gallery rail adorns the tiered top surface with pleasing golden tones
- Inset lock with small escutcheon to the left, securing the door – key present
- Each drawer dressed with a pair of brass drop handles upon circular mounts
- Shaped aprons sit above a quartet of squat cabriole legs standing on pad feet

This is a strikingly presented antique glazed specimen cabinet. A superb example of Victorian and later craftsmanship, with the fitted drawers matching the quality of the delightful cabinet. Solid joints and construction, delivered waxed, polished and ready for the collector.

Search [London Fine for #18.8073](#), or scan the QR code for more photos and details

DIMENSIONS

Max Width: 58.5cm (23")
 Max Depth: 42.5cm (16.75")
 Max Height: 110cm (43.25")
 Drawer Width: 45.5cm (18")
 Drawer Depth: 32cm (12.5")
 Drawer Height: 9cm (3.5")

