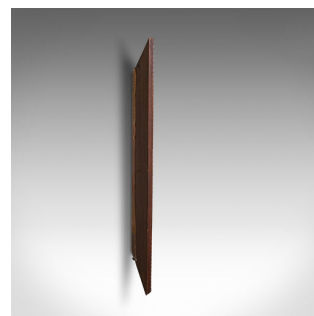
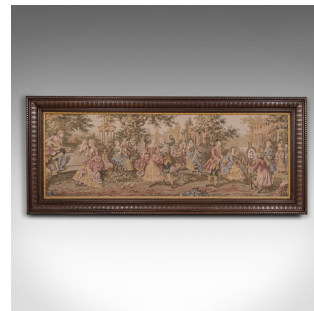


Antique 6' Wide Panorama Tapestry, French, Needlepoint, Wall, Framed, Edwardian



DESCRIPTION

Our Stock # 18.7790

This is an antique 6'5" wide panorama tapestry. A French, needlepoint wall panel in frame, dating to the Edwardian period, circa 1910.

- Impressively wide and deeply mounted within the broad oak frame
- Displays a desirable aged patina and in good order throughout
- Quality needlepoint tapestry with attractive natural colours
- Presented within a quality, carved and detailed bevelled frame
- Depicts a classical European noble gathering in the grounds of a stately home
- Foliage resplendent in fine detail with neo-classical architecture in the background
- Guests fawn over a lute player at one end, whilst a lady sits for her portrait opposite
- Bordered with a bright, gilt beaded edge, catching the light as your eye gazes upon the tapestry

This is a delightful antique panorama tapestry, of country house proportion at ' wide. Distinctive wall covering for a larger room or institution. Delivered polished and ready to mount.

Search [London Fine for #18.7790](#), or scan the QR code for more photos and details

DIMENSIONS

Max Width: 200.5cm (79")
 Max Depth: 8cm (3.25")
 Max Height: 84.5cm (33.25")
 Bevel Depth: 6cm (2.25")

