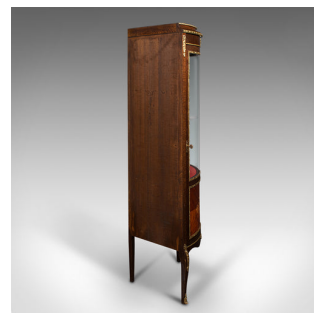


Tall Vintage Corner Vitrine, French, Display Cabinet, Late 20th Century, C.1970



DESCRIPTION

Our Stock # 18.7868

This is a tall vintage corner vitrine. A French, mahogany and kingwood display cabinet, dating to the late 20th century, circa 1970.

- Impressively ornate cabinet with striking appearance
- Displays a desirable aged patina and in good order
- Kingwood and mahogany show fine grain interest
- Deep chestnut and caramel hues beam beneath a wax polish finish
- Bombe-front profile with clear, bright glazed door
- Door dressed with small gilt lock escutcheon — in working order, key present
- Striking field panel with bookmatched veneer, hosting an inlaid bouquet of flowers
- Gilt mounts and borders catch the eye throughout the fascia and legs
- Dressed in rich crimson patterned fabric, the interior glows temptingly
- Removable glass shelf sits above a fixed shelf and concealed lower tier
- Sinuous front apron intersect the pair of cabriole legs, set at an oblique angle

Search [London Fine for #18.7868](#) , or scan the QR code for more photos and details

DIMENSIONS

Max Width: 63cm (24.75")
 Max Depth: 45cm (17.75")
 Max Height: 151.5cm (59.75")
 Shelf Width: 49.5cm (19.5")
 Shelf Depth: 32.5cm (12.75")
 Above Shelf Height: 44cm (17.25")
 Below Shelf Height: 33.5cm (13.25")
 Lower Tier Height: 33cm (13")

LIST PRICE

£2,450.00

