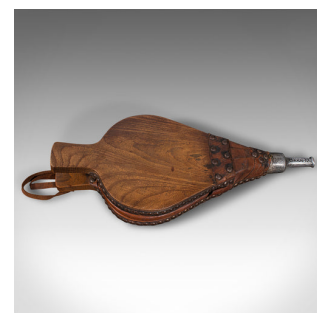


Set of Antique Fireside Bellows, English, Elm, Leather, Fireplace, Victorian



DESCRIPTION

Our Stock # 18.8075

This is a set of antique fireside bellows. An English, elm and leather fireplace tool, dating to the late Victorian period, circa 1900.

- Pleasingly crafted bellows with charming fireside appeal
- Displays a desirable aged patina throughout
- Elm stocks present fine grain interest and rich caramel hues
- Quality leather squeezebox in good working order
- Cast blow hole with relief maker's mark for Alcosa
- Leather loop to top ideal for hanging

This is a charming set of antique fireside bellows, with great colour and finish. Ideal for hanging alongside the fireplace. Delivered polished and ready to enjoy.

Search [London Fine for #18.8075](#), or scan the QR code for more photos and details

DIMENSIONS

Max Width: 21cm (8.25")

Max Depth: 7.5cm (3")

Max Height: 47cm (18.5")

