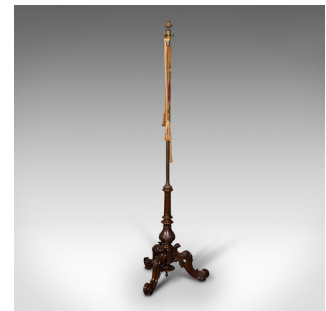


Antique Pendant Pole Screen, English Walnut, Fireside, Decorative Stand, Regency



DESCRIPTION

Our Stock # 18.7991

This is an antique pendant pole screen. An English, walnut and velour fireside decorative stand, dating to the Regency period, circa 1830.

- Superb, attractive example of fireside display furniture
- Presents a desirable aged patina throughout
- Select walnut shows fine grain interest and deep russet hues
- Quality, amber coloured velour panel in very good original order
- Brass final with egg and dart decoration sits atop the riser
- Pendant suspended upon a wide brass rail with supplementary hanging loops
- Delicately hand-painted, the screen hosts a garland of colourful flowers
- Accentuated with a trio of golden hanging tassels beneath the panel
 - Decorated bulb at the terminus of the riser adjoins the enthusiastically carved tri-form base
- Beneath a fluted upstand, a carved acanthus bulb adds further visual detail
- A trio of elaborate carved legs with leaf decorated knees

Search [London Fine for #18.7991](#) , or scan the QR code for more photos and details

DIMENSIONS

Max Width: 48cm (19")
 Max Depth: 42.5cm (16.75")
 Max Height: 147.5cm (58")
 Adjustable Range: 34cm (13.5")

LIST PRICE

£1,295.00

