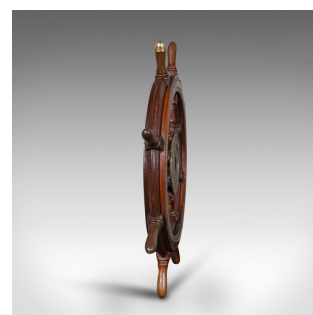


Antique Original Ship's Wheel, English, Teak, Bronze, Maritime, Victorian, 1850

**DESCRIPTION**

Our Stock # 18.8025

This is an antique original ship's wheel. An English, teak and bronze maritime collectable helm, dating to the early Victorian period, circa 1850.

- Appealing maritime display piece with attractive finish
- Displays a desirable aged patina and in good order
- Solid teak shows fine grain interest and reassuringly heavy at 7.45kg (16.42 lb)
- Rich russet hues and bright golden tones throughout
- Eight turned spokes terminating in gently shaped handles
- King spoke decorated with a brass cap
- Bronze plate to the facing felloe adds an appealing contrast
- Further bronze to be found on the nave cap and centre boss

This is an attractive antique ship's wheel with high interest for the nautical collector or suitable decor for a seaside abode. Delivered waxed, polished and ready to display.

Search [London Fine for #18.8025](#), or scan the QR code for more photos and details

DIMENSIONS

Max Width: 76cm (30")
Max Depth: 6.5cm (2.5")
Max Height: 76cm (30")
Bore Diameter: 3cm (1.25")

