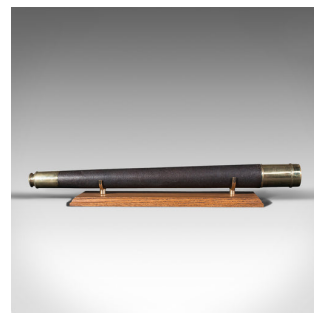


Large Antique Officer Of The Watch Telescope, English, Dollond, Victorian, 1890



DESCRIPTION

Our Stock # 18.8061

This is a large antique 'officer of the watch' telescope. An English, single draw refractor for terrestrial or astronomical use by Dollond of London, dating to the late Victorian period, circa 1890.

Perfect for bird watching, landscape appreciation, wildlife stalking, or maritime observation. Equally suitable for observing the night sky.

- Attractive Officer of the Watch example from the renowned Dollond
- Good optics present a clear performance
- Long, tapering primary barrel in good order with minimal wear
- Draws with a smooth action and focuses easily
- Generously sized 40mm (1.5") achromatic objective behind a removable, sliding dust cap

- Dashing flared eyecup with sliding dust cover and fine concentric detail
- Engraved to draw tube with 'Dollond, London'
- Supplied with a London Fine oak and brass 'Captain's Stand' for display

This is a charming antique Dollond telescope, an example of the Officer of the Watch type favoured onboard in the 19th century. Delivered polished and ready to display or enjoy.

+44 (0) 207 1833 511

Search [London Fine](#) for #18.8061, or scan the QR code for more photos and details



London Fine Ltd
The Antique Village
The Old Whiteways Cider Factory
Hele, Devon, EX5 4PW

sales@londonfine.co.uk
E. & O. E.