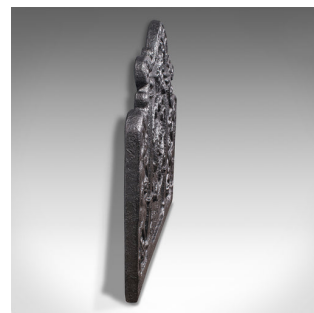


## Large Antique Fire Back, English, Decorative, Fireplace, Maritime, Victorian



### DESCRIPTION

Our Stock # 18.8085

This is a large antique fire back. An English, cast iron decorative fireplace back with maritime taste, dating to the Victorian period, circa 1900.

- Generously sized and highly decorative back
- Displays a desirable aged patina throughout
- Graced with a good, consistent graphite finish
- Impressively heavy cast iron with an edge thickness of 4cm (1.5")
- Bold, shape and relief detail with dome top over scrolled shoulders
- Rope and Anchor icon to centre with charming bird sat atop
- Sea fairies overlook the central scene from the borders, framed with fluted columns
- Dated across the dome top as 1608 - cast in the late 19th century

This is an impressive antique fire back, with great detail and nautical interest. Delivered polished and ready for the fireplace.

Search [London Fine for #18.8085](#) , or scan the QR code for more photos and details

### DIMENSIONS

Max Width: 86.5cm (34")

Max Depth: 4cm (1.5")

Max Height: 72cm (28.25")

