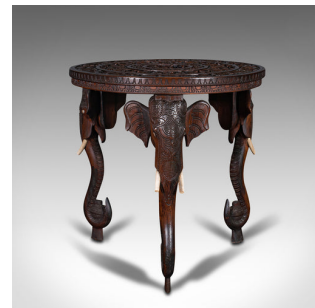


Antique Carved Circular Table, Indian, Teak, Colonial, Campaign, Victorian, 1900



DESCRIPTION

Our Stock # 18.8115

This is an antique carved circular table. An Indian, teak colonial campaign table with elephant masques, dating to the late Victorian period, circa 1900.

- Enthusiastically carved table with charming legs
- Displays a desirable aged patina throughout
- Solid teak presents deep russet hues
- Each of the three legs skilfully crafted into a striking elephant masque
- Profusely decorated top with central medallion encircled by leaf and foliate patterns
- Medallion shows a figure with amphora tending to plants
 - Elephants wearing ornate head-dress, with contrasting bone tusks - curiously blunted
- Standing upon bun feet beneath scrolled legs taking the form of a trunk

This is a fascinating antique carved circular table, with elaborate carved detail and superb elephant heads to each leg. Solid joints and construction, delivered waxed, polished and ready for the home.

Search [London Fine for #18.8115](#), or scan the QR code for more photos and details

DIMENSIONS

Max Width: 53cm (20.75")

Max Depth: 53cm (20.75")

Max Height: 54.5cm (21.5")

