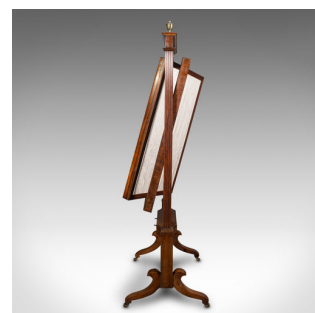
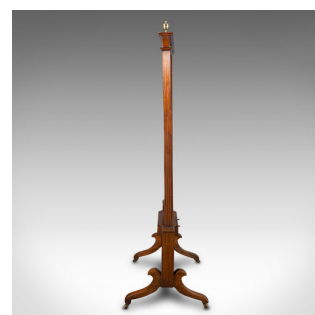
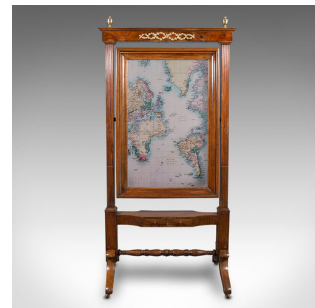


Antique Shop's Dressing Mirror, English, Walnut, Cheval, Retail, Regency, C.1820



**DESCRIPTION**

Our Stock # 18.8055

This is an antique shop's dressing mirror. An English, walnut cheval mirror with rare tilt and swivel action, dating to the Regency period and later, circa 1820.

- Superb retail dressing mirror with excellent proportion
- Displaying a desirable aged patina throughout
- Select walnut shows fine grain interest and rich caramel hues
- Original mirror plate shows a sought-after light foxing
- Sitting atop the tall frame, the crown adorned with a pair of brass finials
- The apron accentuated with ormolu mounts in foliate wreath form
- Support columns with reeded finish terminate in Doric capitals
- Fully articulated mirror frame upon the horizontal and vertical axis
- Generously sized, the mirror presents a clear, bright reflection
- Mirror back finished with a crisp, white silk cotton fabric displaying a foliate pattern
- Pair of small drawers sit beneath the frame, dressed with small circular pulls

Search [London Fine for #18.8055](#) , or scan the QR code for more photos and details

**DIMENSIONS**

- Max Width: 105.5cm (41.5")
- Max Depth: 58.5cm (23")
- Max Height: 201cm (79.25")
- Mirror Plate Width: 89cm (35")
- Mirror Plate Height: 94cm (37")

**LIST PRICE**

£7,885.00

