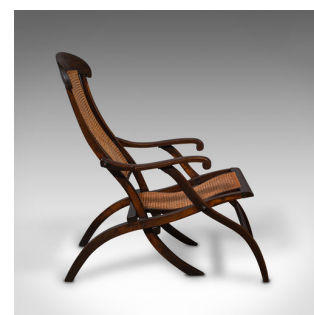


Antique Steamer Deck Chair, English, Beech, Bergere, Armchair, Edwardian, C.1910



DESCRIPTION

Our Stock # 18.8143

This is an antique steamer deck chair. An English, beech and bergere cane folding armchair or garden lounger, dating to the Edwardian period, circa 1910.

- Distinguished form with serpentine, rakish appeal
- Displays a desirable aged patina throughout
- Dark French beech shows fine grain interest beneath a wax polish finish
- Cane in good order and displaying a wonderful caramel colour
- Relaxed backrest position for those peaceful moments
- Sinuous, stout arms with scrolled knuckles fold upright for stowage
- Rush seat cushion in very good order, with saddle form for comfort
- Stands upon six, elegantly shaped legs

This is an unusual antique steamer deck chair, perfect for suntraps and temperate sojourns. Solid joints and construction, delivered waxed, polished and ready to enjoy.

Search [London Fine for #18.8143](#), or scan the QR code for more photos and details

DIMENSIONS

- Max Width: 53cm (20.75")
- Max Depth: 86.5cm (34")
- Max Height: 95cm (37.5")
- Seat Width: 30cm (11.75")
- Seat Depth: 57.5cm (22.75")
- Folded Width: 54cm (21.25")
- Folded Depth: 17.5cm (7")
- Folded Height: 118cm (46.5")

