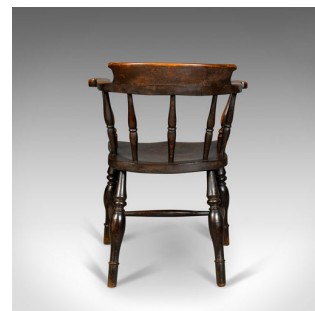
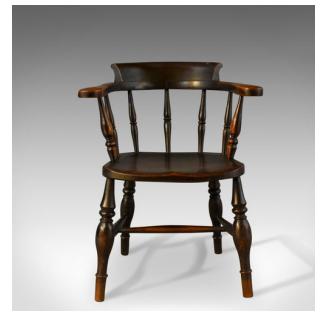


Antique Bow-Back Chair, English Victorian Elm Windsor c.1870

**DESCRIPTION**

Our Stock # 10.1804

This is an antique, bow-back chair, sometimes referred to as a 'Smokers' or 'Captain's' chair. An English, Victorian elm Windsor piece from the mid 19th century c.1870.

- Attractive deep, rich tones to the elm with a desirable aged patina
- Displaying good grain detail in the saddle seat slab
- Standing upon ring turned legs united by an 'H' stretcher
- Ring turned spindles rise obliquely supporting the horseshoe armrest
- Terminating in out-turned scrolled hand grips
- The back crowned with a scroll back for added comfort and support

A sound example offering a comfortable seat. Solid joints and construction, delivered waxed, polished and ready for the home.

Search [London Fine for #10.1804](#), or scan the QR code for more photos and details

DIMENSIONS

Max Width: 64cm (25.25")
Max Depth: 52cm (20.5")
Max Height: 79cm (31")
Seat Width: 39cm (15.25")
Seat Depth: 44.5cm (17.5")
Seat Height: 44cm (17.25")

