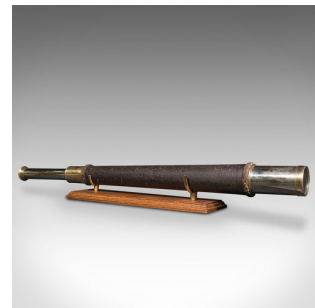


Antique Officer Of The Watch Telescope, English, After Dollond, Victorian, 1890



DESCRIPTION

Our Stock # 18.8063

This is a large antique 'officer of the watch' telescope. An English, single draw refractor for terrestrial or astronomical use in the manner of Dollond of London, dating to the late Victorian period, circa 1890.

Perfect for bird watching, landscape appreciation, wildlife stalking, or maritime observation. Equally suitable for observing the night sky.

- Appealingly patinated Officer of the Watch type telescope
- Displays a desirable aged patina throughout
- Long, tapering primary barrel dressed with a weathered canvas and rope jacket
- Eye-catching silvered and brassed metalwork catches the eye
- Single tube draws smoothly with a reassuring action
- Generously sized 45mm (1.75") objective in good order
- Flared eyecup decorated with fine concentric detail
- Indistinctly engraved to the draw tube 'D... London 7667' in the manner of Dollond
- To the reverse, remnants of a personalised engraving
- Supplied with a London Fine oak and brass 'Captain's Stand' for display

DIMENSIONS

Closed Length: 63.5cm (25")

Fully Drawn Length: 81.5cm (32")

Objective Diameter: 45mm (1.75")

LIST PRICE

£1,095.00



Search [London Fine for #18.8063](#), or scan the QR code for more photos and details